

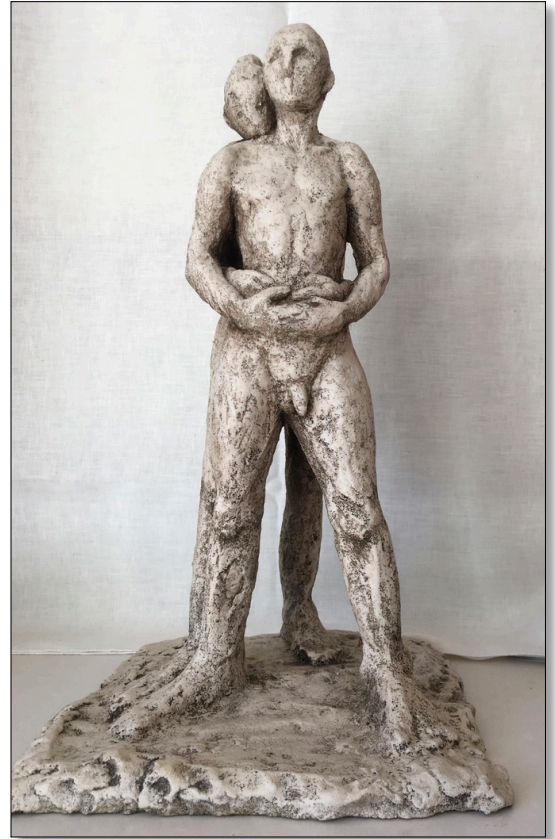
Elizabeth Gordon

I have been attending sculpture and life drawing classes for many years. My aim is to make expressive figures that convey some emotional feeling – but I find that incredibly difficult! I like working with grogged crack clay which I find forgiving and also robust to handle.

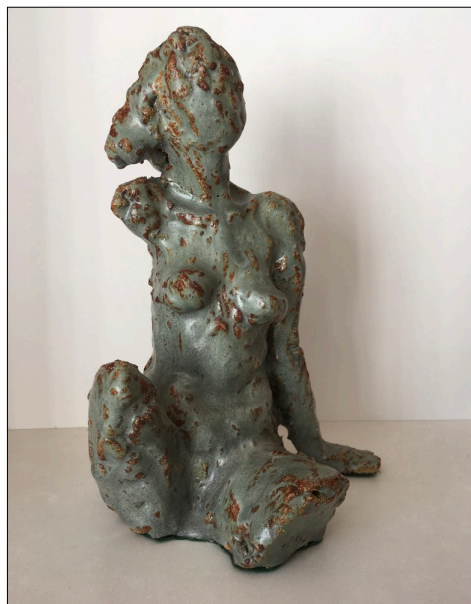
The presence of the live model in a class is a great gift and I think that the relationship between the model and the person attempting to sculpt his or her body is what makes or breaks the work produced. We are lucky at Sunningwell to have generous models who are involved and interested in the whole process of creating art.



Seated figure – clay cast in bronze



The Flight out of Eden – clay cast in resin resin and waxed



Seated abstracted figure (Ruby) – clay fired with celadon glaze